

d:of{^a\bL ax'd'vL SofDk;

MARSYANGDI MULTIPLE CAMPUS
(Accredited by UGC Nepal, 2022 AD)

j;Lzx/-& ndh⁹

kmfjg g+ y^^-%@)@l#

Website: www.mmc.edu.np



jflif{s k|ltj]bg @)&(.)*)

Budget: F/S 2080-081

Publication Date: 2080-08-15

jflif{s k|ltj]bg @)&(.)*)

k|:t]tf

>L xl/]tj' yfkf

SofDk; k|d'v

k|sfzsM

d:of{^|bL ax'd'vL SofDk;

]j;Lzx/-&, ndh[®]

kmfjg g+ M)^^-%@)@l#

Website : www.mmc.edu.np

Email: mmccampus2020@gmail.com

cf'd'v

lhNnf l'yt ;DK'Of{ lzifk]]dL a'14hLIj .fdflhs sfo{stf{ /fhgLIhs bn .
;dfh;]]L Jofkfr/L tyf ;d:t ndh^ajf.Lx?sf] rfxgf cg'i/ ndh^a lhNnfdi pRr
lzifstf] Hof]lt km)nfpq @)S& ;ndf :yfkgr eO{ :yfkgr eO{ cg]sf]+ cf/f]x-
cj/f]xx? kf/ ub}{ d:of{^alL ax'd'vL SofDK; xfnstf] cjZyfdi k]]z u/]sf] 5 .
;JR5, zfGt / /dOfLo jttf/Odfi c]] yt o, SofDK; aj.Lzx/ gu/kfinsf leq ndh^a
lhNnfs) k]xnfi ;fd'bflos SofDK;sf] ?kdf pbfPsf] 5 . h'g of] lf]qs} ul/df /
u]/]sf] ljfo xf] . pRr lzifnox? ePsf d'n zx/x? sf7df08f], kf]v/f, e/tk' / h.tf
:yfgx?df kx'Fr gk'Ug] ljKGg. blnt. ckt+u, hghfLL / dlxnfX?sf] z)]lfs
;d'Ggltdf o; SofDK;n] pNn]vgLo of]ubfg k'of{pb} cfPsf] 5

SofDK;n] ;gl @)@@ h'nfo{ !# -@)&(cfiff9 @(_ sf lbg z)]lfs
u'Of:t/ k]Tofog k]df0fkq (Quality Assurance and Accreditation
Certificate) k]fKt u/]sf] 5 . o; pknAwL k]fiKtsf nflu ;~rfns ;ldt, cleefjs,
;xof]ubftf, k]fWofks, k]zf.s, sd{rf/L, ljBfyL(Pj+ ;f]sf/jhf ;]sf] ct'nigo
b]g /x]sf] 5 .

o; k]lt]]bgn] SofDK;sf] z)]lfs, Joj:yfksLo, ef]lts, cfly(s Pj+ cGo
;DK'Of{ utl]wLx?sf] jflif{s ljj/Ofnfo{ oyfy{?kdf k]t't u/]sf] 5 . o; sfo{df
;xof]u k'ofpg'x'g] Joj:yfkg ;ldtsf c'Wof, SofDK; k]d'v, ljefuLo
k]d'vx?, ;ldtsf ;+of]hsx?, k]fWofksx?, sd{rf/Lx? Pj+ ljBfyL(x? tyf o;
k]lt]]bgsf] 5kfo{df ;xof]u k'ofpg] k]i;sf ;tyLx?k]lt cfefi k]s6 ub{5f]+

xl/afa' ykf
SofDK; k]d'v

Index

SofDK;sf] kl/ro (Back Ground)	6
Academic Progress	
• Enrolment Trend Analysis of the Last Three Years (program wise Level wise) Disaggregated by female & Educationally Disadvantaged Students	16
• Pass rate Trend Analysis of the Last Three Years (program wise Level wise) Disaggregated by female & Educationally Disadvantaged Students.	17
• Graduate Trend Analysis (program wise Level wise) Disaggregated by female & Educationally Disadvantaged Students.	19
• Programs	19
• Educational pedagogy	20
Physical Progress	20
• Infrastructure Development	
• Educational Aids	
Educational Equipment (ICT, Lab Equipment, etc.)	
Books/Journals/Reference Materials	
Furniture	
Financial Progress	22
• Analysis of Financial Resources Income of the last Three years	
Self-Generated Resources Income	
Student fee	
Others	
Grants From Government Sources	
UGC	
Other Government Bodies	
Others Sources	

Expenditure Analysis of the last three years

Recurrent Expenses:

Salary

Others

Capital Expenditure:

Major Infrastructure Development

Minor Infrastructure Development

Equipment

Books

- Audit Observation Issue & steps taken to mitigate the issue Raised by Audit Observation in the last Fiscal Year

Social Progress 24

- College's Involvement in Social Activities.
- Society's contribution for Campus.
- Plan for College's Contribution to Society
- Plan for Increased Involvement of society in the College

Issues & Challenge 25

- Short Terms
- Long Term
- Mitigation Measures Taken to Address the Issues & Meet the Challenges
- Plan for Addressing the Issues & challenges

Annual Work Plan & Budget of the Current Fiscal Year (As per The strategic Plan) 27

SofDk;sf] kl/ro

ndh¹⁸ lhNnfsf] ,b/d'sfd a]Lzx/df tTsflng ,dodf pRr lziff k|bfg ugj[s'g) SofDk: gePsf] sf/Of oxF1sf ljBtyL(x? pRr lziff xfLn ugj[clenfiff k'/f ug[ndh¹⁸ afix/ hfg' kb{Yof] . o,)nfO(dWo gh/ /fvL pRr lziffsf] Hof]lt ndh¹⁸sf] k]To]s 3/ b]jv em'k8L ,Dd anfj,\ eGg] k'lgfM p2]Z0 /fv/ ndh¹⁸ lhNnfsf lziff k]dL ,j'14lhjL ,dfh,jjL ,/fngLit1x?sf] hfj, hFfu, :s]otf, pT,fx, pTs[i6 clenfiff P]+d\ cu]/tfd z'?sf lbgdf hg l]sf, df=lj=-xfnsf] hg l]sf, pRr df=lj=_ df @)S& ,fnaf k|ljOfit k|dfOf kq txsf] ?kdf :+rfng ePsf] o, SofDk: cfh cf'g) ef]lts :+/rgfdf :gfsf]Q/ slff - Pd=P=, Pd=P8, / Pd=lj=P,=_ ,Dd ,+rfng ug[:lfd ePsf] 5

d:of{^bL ax'dvL SofDk: hg:t/af6 :+rfng ePsf] lhNnfs] :a)eGbf 7"nfj k'/fgf] / wj/} tx / :+sfo ePsf] ,fd'bfls SofDk;sf] ?k kl/lit 5 . o;n] wj/) ptf/ r9f] kf/ ub){ xfnsf] c]yfdf cfOK'u]sf] 5 . o; c]yfdf cfOK'Ugsf] nflu :+yfxsx?sf] cys k|of, :/f]sf]/fnfx?sf] dxTjk"Of{ :xof]u, lzifs sd{rf/L ljBtyL(x?sf] :xof]u / of]ubfg g) xf] .

o;n] cf'gf] ef]lts tyf z]l]fs l]sf,nfO(tLj] tl/sfn] cuff8 j9fO(/x]sf] 5 . o;sf] ef]lts klf / z]l]fs k]fsf] l]sf,sf] nflu dWo d:of{^bL 5/15d]s sfo(qmd, ef/tLo b"tjf, ,lh=lj=,= :yfgLo uf=lj=,= ,ljZ]jBfno cg'bfg cfof]u, k|bjz :/sf/, :yflgo :/sf/ / cGo +3 :+yfx?jf6 :xof]u pknAw x'b) cfPsf] 5 . olt dfq ge) z]l]fs tyf ef]lts l]sf,sf nflu ljZ]jBfno cg'bfg cfof]u

- improve internal efficiency.
- to provide market need education.
- to provide Ideal, moral & ethic manpower.
- Develop financial sustainability of the organization.
- Develop as a socially responsible educational institution, maintain good relationship with the Community & Stakeholders

Mission:

The Mission of Marsyangdi Multiple Campus is to provide access to higher education for the people of the western region & the Country with emphasis to 'Janajati', Dalit, women & other marginalized groups. It is dedicated to produce highly efficient human resource and guide from the defined mission:

- to produce skilled manpower.
- to deliver ideal, moral, ethical & quality education services to society at affordable cost.
- to preserve local culture and tradition.
- to Introduce means for self-sustainability.
- to Establish as a Research Centre of the District.
- to serve the students by teaching them problem solving leadership and team work skills.

Objectives

This plan is concentrated towards realizing these achievements:

1. To increase pass percentage of students.
2. To increase graduate employment.
3. To achieve operating cost & effectiveness of this institution.
4. To increase opportunity of education for marginalize & disadvantaged group.
5. To increase community participation.
6. To increase students' participation in every activity.
7. To improve and extend physical facilities.
8. To establish well-managed library.

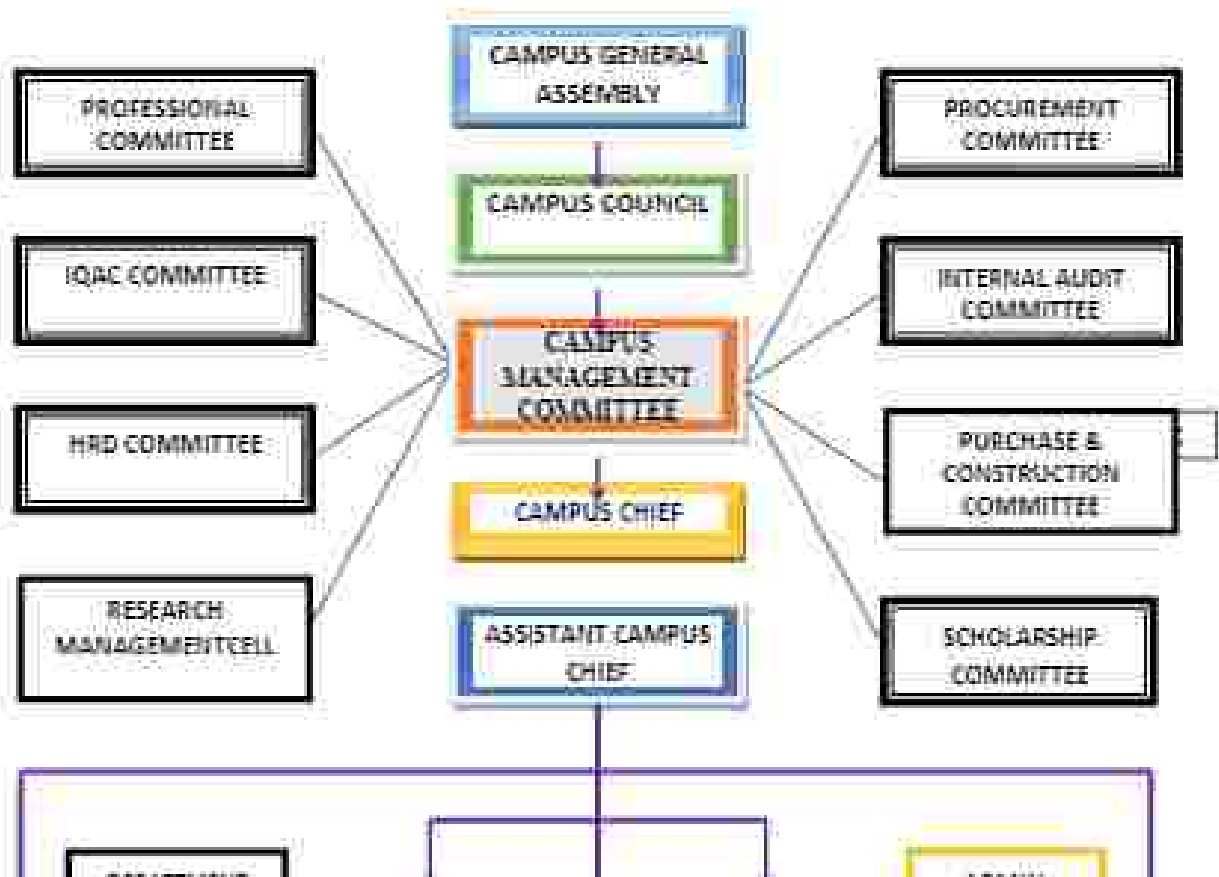
9. To use modern information technology
10. To introduce new, modern and technical subjects-like BBA, MBS, HM, BHM, Mass Communication, Travel & Tourism, & Computer Science:

Major Priorities:

This institution has set these priorities for the coming five years.

1. To raise academic performance of Campus.
2. Increase in pass ratio and achievement through different activities.
3. Capacity building training to administrative staff.
4. Further study program for teaching and non-teaching staff.
5. Effective organizational records through well management.
6. Introduce student support program.
7. Introduce system for responsibility, accountability and transparency.
8. Establish different department to make educational environment sound and effective.
9. Increase student enrolment by introducing Saleable Courses.
10. Provide additional courses responsible to generate job opportunity.
11. Launching of new programs
 - Introduction of additional subjects in master degree level.
 - Hotel management, Travel & tourism & Mass Communication.
 - Manage well library book recording by use of modern software & reform program in different part of the campus.

d:of(®\bL ax'd'vL SoFDK;sf] ;f+u7lgs 9fFr





d:of{^a\bL ax'd'vL SofDk;

a);Lzx/-II, ndh^e

**bzf)+ SofDk; ;efaf/f lgjf{lrt jt{dfg ;+rfns ;ldltsf ;b:ox?sf}
gfdjnl**

S.No.	Name	Designation	Address	Contact No	Remarks
1	Krishna Bahadur Adhikari	Chairman	Besohakar-7	9856045310	Elected
2	Hari Prasad Baral	Out-going Chairman	Besohakar-9	9856045399	Off/dio
3	Subhash Poudel	Vice-Chairman	Besohakar-7	9819161999	Elected
4	Mohan Bahadur Thapa	Member	Besohakar-7	9845098998	Elected
5	Bimal Shrestha	Member	Besohakar-8	9845074324	Elected
6	Bilal Raj Gurung	Member	Besohakar-4	9856045390	Elected
7	Sunil Sunar	Member	Sundarpazar-1	9856045894	Elected
8	Laxmi Thapa	Member	Besohakar-3	9845753448	Elected
9	Mahendra Sharma Poudel	Member	Besohakar-7	9845087671	Elected

10	Yuba Raj Foudel	Member	Besishahar-8	9835046066	Elected
11	Pram Bahadur Saket	Member	Manryangdi-3	9835030885	Elected
12	Jun Bahadur Tamang	Member	Besishahar-10	9835045836	Elected
13	Sita Shrestha	Member	Besishahar-8	9845098894	Elected
14	Purna Bahadur Thapa	Member	Besishahar-10	9835045975	Nominated
15	Krishna Kumar Pradhan	Member	Besishahar-7		Nominated
16	TU Representative	Member			Officio
17	Chairman (Prof. Asso, MMC Unit)	Member		9846315198	Officio
18	Mayor, Besishahar Municipality	Member		9845074154	Officio
19	Chairman (Chamber of Commerce, Besishahar Unit)	Member		9845074009	Officio
20	President (Free Students Union, MMC Unit)	Member			Officio
21	Hari Babu Thapa	Member Secretary		9835043380	Officio

SofDk;sf] l]Bdfg ef}lts cj:yf

ef}lts k'}(wī/sf] b]l]6n] xfn SofDk;sf] cf'g) :jfldT]df &(/f]kgL hldg 5 / j],Lzx/-& df /x]sf] !& /f]kgL hldgsf] kll// leq SofDk;sf] tLg]6f tLgtn] e]g / k':tsfno k]of]hgsf nflu Pp6f tLgtn e]g u/L rf/a6f kSsL e]g lgdf{Of u/Psf] 5 . ef/Lo b'tfj;sf] :xof]udf k':tsfno e]gsf] lgdf{Of ePsf x]f] e]g k':ts/ kmig(r/sf] :d]t plrt k]jGw u/Psf] 5 . SofDk;sf] ,"rgf k]0ffnL Jo]l:yt ug{ SofDk;sf] www.mmc.edu.np_gfds website]g]sf] 5 e]g] n]vf k]0ffnL / nfO]]/LnfO{ Jo]l:yt ug{ :D]lGwt :km'6]0/ e-zone international, Kathmandu af6 wLb u/L clen]lvs/Of k]lqmf cfuf8L a9]sf] 5 . SofDk;df zf]rfno, Changing Room, First Aid Room, Computer Lab, Hotel Management Lab, V]n d]bfg, rd]gf u[x, k':tsfnos] /fd]f] Jo]:yf 5 .

l]BfyL{ pQL0f{ ;+VofM

xfn:Dd o; SofDk;af6 k]df0f kq tx , :gfts tx / :gfts]Q/ tx u/L hDdf #@* & l]BfyL{x?n] k/Llf pQL{0f u/P;sf 5g\ .

xfn cWoog/t l]BfyL{ ;+Vof

s_ :gfts]Q/ M &
v_ :gfts tx M \$\$\$
u_ ±@ -slff !! / !@_ M ##@
hDdf -*\$\$

xfn sfo{/t k]fWofks tyf sd{rf/Lx?sf] ;+Vof

qm=;+=	kb	;+Vof	k]sf/			
			:yfoL	c:yfoL	s/f/	cf+lzs
	k]fWofks					
@	;x-k]fWofks					
#	pk-k]fWofks	^	#	#		

\$.xios- k fWofks	!%:	!	!	%	*
%	n]vf tyf k zf;sLo clwsjt	!	!			
^	pkk zf;s -k/Llff zfvf_	!	!			
&	.x: n]vfkln - gf='=_	!	!			
*	nfO{a j kog - gf='=_	!	!			
{	sfof(no .xof]uL	#			#	
)	rf]sLbf/	!			!	
	hDdf	#!	!)	S	(*

SofDk;sf] cj:yf cg':f/ l]BfyL{x?sf nflu pknAw :!jwfx? IgDg
cg':f/ /x]sf] 5g\ .

!_ k':tsfnosf] /fd]f] Joj:yf .

@_ v]ns"+b-km"6jn,elnjn=]f.s]6jn, Jof8ldG6g_

#_]tGq l]BfyL{ o"lgog .

\$_ ctt/Qm lqme]snfk .

%_ 5fqj]IQ sfo{qmd M

s_ pTs]i6 5fqj]IQ

v_ u/L] tyf h]x]Gb/ 5fqj]IQ

u_ 5fqf 5fqj]IQ

3_ blnt 5fqj]IQ

^_ 5fqj]IQsf :|]tx? IgDgfg' /f /x]sf 5g\ .

s_ SofDk;sf] gLh :f]jt

v_]= lu/Lhf k]fb sf]O{/fnf :d]it cifos]if 5fqj]IQ

u_ lns axfb/ k]8]n clfo sf]if 5fqj]IQ

3_]=df]xg axfb/ yk'f :d]it cifos]if 5fqj]IQ

&_ g]6 OG6/g]6sf] :!jwf .

ldit @)*> >fjOf I% ut] :fjdjf/ a.]sf] :+rfns ;lditsf] a)7ssf] lgOf{o
 g+=& cg';f/ cfly{s aif(@)*>. *1 sf nflu gLit tyf sfo{qmd ;xt k):ffjt
 ah]6 th'(df d.of)bf pk;lditaf6 to u/Psf **p4]Zo Pj+ k|fyldstfsf**
lf]qx?–

- s'n l]BfyL{ ;+Vofsf] % k]ltzt k"Of{ tyf % k]ltzt cf+lzs 5fqj[lQsf]
 Joj:yf ug}{ .
- ;dofg's'n k"tsfnofO{ cfw'lgsLs/Of ug}{ .
- 5fqf 5iqfjf ;+efAotf cWoog u/L lgdf{Of ug}{ .
- k]fWofks / sd{rf/Lx?nfO{ cWoog cg';Gwfg. n]v. /rgf tyf s]lt
 k]sfzg .fy} :yfioTj tyf k]zful l]sf:sf sfo{qmdx? tyf tfindx? ;+rfng
 ug}{ .
- k]fWofks sd{rf/L sNofOfsf/L sf]jfnfO{ Joj:yt agfO{ sfo{/t
 k]fWofks sd{rf/Lx?sf] dg]jan pRr agfpg .yf]go a)+sdf gLhx?sf]
 Jo]Qmut vftf v]jnL ;+rfngdf Nofpgsf nflu cfly{s lgodf]nLdf
 Joj:yf ug}{ .
- ;+rfns ;ldit. k]fWofks sd{rf/L / l]BfyL{x?nfO{ ;do ;dodf cWoog
 ejn]sg e]dOfsf] Joj:yf ldnfpg] .
- l]BfyL{x?sf nflu SofDk. a. tyf SofG6Lgsf] Joj:yf ug}{ .
- l]zi6 tyf cfhL]g SofDk. ;ef,bx?nfO{ .Daf]wg ub}{ jflif{s sfo{qmd
 tyf k]lt]bg pknAw u/fpg] .
- ;f]js afFemfv]t uf=lj=—& -x]n a].Lzx/—!_ cfFk8fF8f l]yt
 SofDk:sf] btf{df /x]sf] hUuf / cGo df]xLx?sf] hUufnfO{ v/Lb jf
 ;6\6fk6\6f u/L cfaZostf cg';f/ hUuf Plss[t ug}{ .
- SofDk,nfO{ cg';Gwfg s]Gb]sf] ?kdf l]sf, ug}{ . -u08sL k]b]zsf]
 e]uf]ins. k]fs[its. P]itxf]s. k'/ftf]T]s. ;df]hs. ;f+s[its. z]l]fs
 uitl]wL .fy} /fngL]ts uitl]wLsf] cg';Gwfgdf k]fyldstf lb]g]_
- ck'/f sDkfp08L^a sfo{nfO{ k"Of{tf lbb)+ v]n d)bfgnfO{ Joj:yt
 agfpg] .
- ;tGq l]BfyL{ o"lgogsf] 5'6\6} a)+s vftf ;+rfng u/L ;f] ;+u
 ;DalGwt cfDbfgL tyf vr{nfO{ Joj:yt ug}{ .

- lJBdfg SofDk; j]j,f06nfO{ :do;fk]if :v/fjGgtLsf nflu cfaZos k|lqmof.cuf8L a9fpg] .
 - Kn; 6' b]iv :gftsf]Q/ tx :Ddsf nflu cfaZos k'ts, kmig{r/ tyf z'4 lkpg] kfgL :|xt eGo z]lfs :dfu|Lx?sf] Joj:yf ug]{ .
 - g]kfn lJB't k|f]ws/0fsf] d:of{^\bL sf]l/8f]/ cGtu{t @@) s]=eL= k|zf/0f nfO{gn] pkof]u u/]sf] s/La l /f]kgL % cfgf hUufs] lftk"lt{ dfu u/L pQm /sdnfO{ k"jf{wf/ l]sf, tyf z]lfs u'0ft/ clej]l4sf nflu vr{ ul/g] .
 - SofDk;sf] k"jf{wf/ l]sf, lgdf{0f tyf z]lfs u'0ft/ clea]l4sf nflu u08sL k|b]z :/sf/ / :yflgo :/sf/+u :dGjo ug]{ .
 - :gfts txdf lj=lj=P=, lj=Pr=Pd= / :df]hs cWoog sfo{qmd ljfo yk ug]{ .
 - :gfts txdf k|f]l]ws wf/sf ljfo? :+rfngsf nflu :+efAotf eWoog ug{ sfo{bn u7g ug]{ .
 - SofDk; :ef,b, c]fosf]r]bftf Pj+ rGb]bftf?sf] :+Vof a[l4 ub){ hfg]
-
- k"j){ lJBfyL{ :df]hsf] SofDk; s]lGbjt lqmof]zntf]nfO{ hf]8 lbg]
 - ljleGg lf]qdf lqmofzLn Pj+ ;kmn SofDk;sf pkhx?nfO{ :Ddfg ub){ hfg] .
 - :do;fk]if cfaZostf cg'f/ SofDk;sf] ljwfg, lgb){l]zsf / lgodf]nLx?nfO{ :+f]wg / Joj:yfkg ub){ hfg] .

SofDk;sf cj;/ / r'gf)tLx?

- SofDk;df bInt, cfibjf.L hghftL, 5fqf / cfly{s IjKGgtf ePsf IjBfyL{x?sf} afx'Notf .
- IjBfyL{x?sf} slff 5f8'g} pRr b/nfO{ Go'g ug} .
- tx plQOf{ kZrt /f]huf/Lsf] Uof/]G6L gx'g' .
- pRr lzIf k|It cleef]s tyf IjBfyL{x?df a9\b} uPsf] g)/fZotf / a)b]zls lzIf k|f]sf] df]x .
- lzIfk|f]sf] cleef]s tyf IjBfyL{x?df a9\b} uPsf] g)/fZotf
- IjleGg cj;/sf] v]hLsf ,fy} pRr lzIfsf] n]u IhNnfaf6 af]d/g] IjBfyL{x?nfO{ IhNnf} /f]Sg.g,Sg' .
- cfly{s IjKGgtf ePsf IjBfyL{x?sf} 5fq][IQsf] Joj:yf .
- z]lfs u'Of. / k|Tofogs[t k|dfOfkqsf] dxT]nfO{ hL]Gttf lbg' .

!_ cNksfnLg (Short term Priorities)_

- SofDk;df]u)+rfsf] lgdf{Df
- kmig[r / e]gsf] plrt Joj:yf / dd{t ;+ef/ ug}{ .
- b]foT] / c]wsf /]xsf] Ijifout Ijefu u7g k|lqmf]nfO{ sfof{Gjog ug}{
- sDKo'6/ tyf cGo ef]f]ut t]f]ndsf] Joj:yf .
- df]h'bf IjBfyL{ ;+Vofdf @) k|Itzt :Ddn]][l4 / .]xL cg'k]df 5fq][IQ.b/]l4 ug}{
- SofDk;sf] Ibuf] cfly{s ;]f]tsf] n]u cfhL]g ;b:otf][l4 ug]{ / c]fos]f]sf] n]u b]f]x?sf] v]hL ug}{ .
- Ijifout plQOf{ k|dfOf / b]f]tsf] cfwf/df k|fWofksx?nfO{ k'/:s[t ug}{ .
- Quality Enhancement Program cu]l8 a9fpg] .
- Kn; 6' df gofF Ijifo– sDKo'6/ Ij1fg / sfg'g Ijifo yk ug){ .fy} g]fs tx, Joj:yfkg ;+sfodf Ij=Ij=P=, Ij=Pr=Pd= sfo{qmd ;+rfng ug}{ / lzIfzf.g ;+sfodf ;df]hs cWoo]g Ijifo yk ug){ .

@_ dWosflng÷bL3{sfing (Mid-term & Long term Priorities)

- 5fqjff,sf] Joj,yf ug}{ .
- o'u ,xfp+bf] k|f]lws lzifffsf] cf]lrTo klxrfg ul/ jf+emfv]t l:yt hUufdf k|f]lws lzifffno :+ringsf] nflu cf]Zos u'?of]hgf jgfpq} .
- lqdf{Ofllwg cfw'lgs lzifDf k|f]lwo'Qm slff sf]7f ePsf] ejg lqdf{Of sfo{nfO{ k''Of{tf lbg} .
- k'tsinonfO{ ,dofg's'n t/f]GgtL ub){ n}hfg} .
- k|f]Wofks tyf sd{rf/Lx?sf nflu z}lifs u'Of:t/ clej]{4 :Dj]Gw tfind, :jldgf/ / uf]l7sf] cfof]hgf ug}{ / cf]Zostf cg':f/ z}lifs of]Uotf a]{4sf nflu k7fpg} Joj,yf ug}{ .
- :df6{af]8{ h106 slffsf]7fsf] Joj,yf ug}{ .
- :gfts txd f k|f]lws wf/sf slffx? ,+rfng ug}{ .

Highlight of Major Activities & achievement

SofDk:sf dxTjk''Of{ sfo{qmd (Major Activities)

- u'Of:t/Lo lziff lbg] :ynsf] ?kdf SofDk:nfO{ :ljs:Lt ub){ .
- :do ,fk]f lziff k|OfnLnfO{ cfu]8 j9fqb} .
- z}lifs jff]/Of / Joj,yfksLo kifnfO{ kf/bzL{, hf]kmb]lx,pQ/bfoL agfpFb}
- ljBiyL{x?nfO{ /f]hut/ d'ns lziff tkm{ pGd'v w/fpg :dosf] dfu cg':f/sf ljfox? yk ub){ / pgLx?sf] bliffdf clej]{4 ug{ lj]eGg ,+3 +,yfX?df Internship df k7fpg} sfo{ ub){ .
- :dosf] k/Ljt{g cg':f/ kl/jlt{t sf]if{df lzifxs?nfO{ blf jgfpq ljifout tfind, sfo{zfnf uf]li6, :jldgf/df k7fpg} Joj,yf ul/b}
- SofDk:nfO{ z}lifs jff]/Of o'Qm agfpq Gardening ub){ .

Academic Progress

Enrollment Trend Analysis of the last Three Years												
	B.S. 2077				B.S. 2078				B.S. 2079			
Faculty :-Bachelor's Degree in Education												
	Total	Female	EDU	Dalit	Total	Female	EDU	Dalit	Total	Female	EDU	Dalit
1st	154	128	93	15	108	92	64	22	79	57	35	21
2nd	111	90	54	19	117	61	35	18	41	31	24	11
3rd	69	62	34	10	97	75	65	12	42	37	14	6
4th	42	41	16	4	49	42	21	7	60	43	30	10
Total	376	316	197	48	371	270	185	59	222	163	103	43

Faculty :-Bachelor's Degree in Business Studies

	Total	Female	EDU	Dalit	Total	Female	EDU	Dalit	Total	Female	EDU	Dalit
1st	120	77	61	13	108	70	63	11	72	55	48	12
2nd	85	55	44	6	108	73	52	14	65	43	27	15
3rd	33	24	17	2	60	45	33	6	47	34	21	8
4th	42	34	28	1	32	22	15	2	50	45	34	6
Total	280	190	150	22	308	210	163	33	243	177	130	44

Faculty :-Bachelor's Degree in Humanities and Social Sciences

	Total	Female	EDU	Dalit	Total	Female	EDU	Dalit	Total	Female	EDU	Dalit
1st	1	0	0	0	1	0	0	0	4	0	3	0
2nd	0	0	0	0	1	0	0	0	1	0	0	0
3rd	5	2	3	0	5	2	3	0	0	0	0	0
Total	6	2	3	0	7	2	3	0	5	0	3	0

Faculty :- Master's Degree in Humanities and Social Sciences (Sociology)

	Total	Female	EDU	Dist	Total	Female	EDU	Dist	Total	Female	EDU	Dist
1st Sem	16	8	4	2	15	8	3	1	9	5	3	2
2nd Sem	0	0	0	0	0	0	0	0	0	0	0	0
3rd Sem	19	7	1	9	16	11	6	1	13	6	6	3
4th Sem	30	7	1	4	17	4	7	1	0	0	0	0
Total	65	22	6	15	48	23	16	3	22	11	9	5

Faculty :- Master's Degree in Education (Curriculum and Evaluation)

	Total	Female	EDU	Dist	Total	Female	EDU	Dist	Total	Female	EDU	Dist
1st Sem	2	2	1	0	9	7	4	1	7	4	2	0
2nd Sem	0	0	0	0	0	0	0	0	0	0	0	0
3rd Sem	15	9	8	0	14	8	6	0	6	3	2	0
4th Sem	15	6	4	1	14	8	3	1	0	0	0	0
Total	32	19	13	1	37	23	13	2	13	7	4	0

Faculty :- Master's Degree in Business Studies (MBS)

	Total	Female	EDU	Dist	Total	Female	EDU	Dist	Total	Female	EDU	Dist
1st Sem									26	16	5	9

2nd Sem									0	0	0	0
3rd Sem									22	10	7	2
4th sem									0	0	0	0
Total									48	26	12	5

Pass Rate Trend Analysis of the last Three Years

	B.S. 2077				B.S. 2078				B.S. 2079			
Faculty I- Bachelor's Degree in Education												
	Total	Female	EOJ	Dalit	Total	Female	EOJ	Dalit	Total	Female	EOJ	Dalit
1st												
2nd												
3rd												
4th	8	7	4	2					15	13	8	2
Total	8	7	4	2					15	13	8	2

Faculty I- Bachelor's Degree in Business Studies

	Total	Female	EOJ	Dalit	Total	Female	EOJ	Dalit	Total	Female	EOJ	Dalit
1st												
2nd												
3rd												
4th	10	6	6	1					32	25	14	1
Total	10	6	6	1					32	25	14	1

Faculty I- Bachelor's Degree in Humanities and Social Sciences

	Total	Female	EOJ	Dalit	Total	Female	EOJ	Dalit	Total	Female	EOJ	Dalit
1st												
2nd												
3rd												
Total												

Faculty :- Master's Degree in Education (Curriculum and Evaluation)

	Total	Female	EDU	Dislit	Total	Female	EDU	Dislit	Total	Female	EDU	Dislit
1st									2	1	1	0
2nd									3	1	2	0
3rd									3	1	2	0
4th									4		1	0
Total									12	3	6	0

Faculty :- Master's Degree in Business Studies (MBS)

1st	Total	Female	EDU	Dislit	Total	Female	EDU	Dislit	Total	Female	EDU	Dislit
2nd												
3rd												
4th												
Total												

Graduate Trend Analysis of the last Three Years

B.S. 2077				B.S. 2078				B.S. 2079			
Bachelor Level											
Total	Female	EDU	Dislit	Total	Female	EDU	Dislit	Total	Female	EDU	Dislit
5	3	1	2					7	5	4	0
4	1	2	0					8	6	2	0
								2	2	1	0
								17	13	7	0

Master Level											
Total	Female	EDU	Dislit	Total	Female	EDU	Dislit	Total	Female	EDU	Dislit
								7	2	3	1
								0	0	0	0
								0	0	0	0
								7	2	3	1

k'gZr M of] k|ltj]bg tof/ u]sf] ldt ;Dddf lq=ij=af/f glthf k|sfizt ePsf] dfq
pNn]v .

Graduate Trend Analysis of the last Three Years:

	B.S. 2077				B.S. 2078				B.S. 2079			
Bachelor Level												
	Total	Female	EDJ	Dalit	Total	Female	EDJ	Dalit	Total	Female	EDJ	Dalit
B.Ed	5	3	1	2					7	5	4	0
B.B.S.	4	1	2	0					8	6	2	0
B.A.									2	2	1	0
Total									17	13	7	0
Master Level												
	Total	Female	EDJ	Dalit	Total	Female	EDJ	Dalit	Total	Female	EDJ	Dalit
M.A.									7	2	3	1
M.Ed.									0	0	0	0
MBS									0	0	0	0
Total									7	2	3	1

Affiliation Details & Running Faculties or Programs

SN	Level	Faculty	Affiliated By	Affiliation Date
1	PCL	Humanities	TU	2047/10/11
		Management		
2	Bachelor	Management	TU	2050/12/24
		Humanities		2050/12/24
		Education (3 Year)		2062
		One year B Ed		
3	Master	Education (Curriculum)	TU	2067/3/24
		Humanities (Sociology)		2067/4/6
		Management (MBS)		2078

; +sfo	tx	P]IR5s Ijifox?	s)ikmot
Jo]y]fkg ; +sfo	:g]ts	Finance/Marketing/Accountancy	af]if{s k]O]ffn]L
Jo]y]fkg ; +sfo	:g]ts]Q/		:]d]i6/ k]O]ffn]L
lzl]ffz]f]q ; +sfo	:g]ts I]i]f] S]i]f]	English/Nepali/Pop English/Nepali/Population	af]if{s k]O]ffn]L
lzl]ffz]f]q ; +sfo	:g]ts]Q/	EPM/Curriculum	:]d]i6/ k]O]ffn]L
d]f]g]l]s]L ; +sfo	:g]ts]Q/	Sociology	:]d]i6/ k]O]ffn]L
d]f]g]l]s]L ; +sfo	:g]ts	English/Nepali/Economics/Socio logy/Geography/History/Populati on/Mathematics/Rural Development	af]if{s k]O]ffn]L
+2 sfo(qmd)	lzl]ff, Jo]y]f kg, d]f]g]l]s]L	English/Nepali/Math/Economics/ Population/Sociology/Geography/ History/Population/Mathematics/ Account/Hotel Management/Business Studies/Business Math/ Marketing	l]b]j]f]q

Educational Pedagogy

- 1) Engaged Pedagogy
- 2) Lecture- Lecturer Tutorials & just in time teaching
- 3) Discussion & Interactive Lectures 4) Multimedia Visualization & Instructions
- 5) Case study, Project work & field visit) Assessment Strategies Half & Yearly

Physical Progress

Infrastructure Development

cfly(s aif(@)&(=)*) df SofDk:n] u/]sf ef)lts sfo{x7sf] ;+llfKi hfgsf/L
o, k]sf/ /x]sf] 5

! = ljZ]ljBfno eg'bfg cfof]usf] o, jif(sf] ejg lgdf{Of cg'bfg ?=#!&#*%%
/ utaf(sf] eg'bfg ?=%)))))) u/L hDdf ?=*!&#*%% df b'O{ tn]
k]fl1s ejg lgdf{Of ul/Psf] / SofDk:sf] gLhL ;j]t ?=^*!)#=#!^ nufgL
ul/Psf]

@ = a]Lzx/ gu/kilnsfsf] cfly(s xof]u ?=!\$\$@*\$(df k]fl1s ejgsf]
dflyNnf] tnf lkmglL^a sfo{ ul/of]

\$ = fdfins ljsf, sfof{no, ndh^asf] cfly(s xof]udf k'/fgf] ejg dd{t ;+ef/
? = (\$@)\$(df ul/of]

% = SofDk, k/L/ leq /x]sf] \$ cdfg hUuf ?=*&%) df v/Lb ul/of]

^ = ?=!%%^! = *^ sf] kmig(r/ v/lb ul/Psf]

Educational Aids

! = klAns SofDk, clw]jzg tyf gljs/Of z'Ns u/L hDdf ?=*^)) e'QmfgL
ePsf] 5

@ = O(G6/g]6 ;jif k]bfos ;+yf g]kfn 6]InsdnfO{ aflif{s z'Ns jfkt ?=
!(#)) Psd'17 e'QmfgL ul/Psf] 5

= E-zone international nfO{ ?=%)*%) e'QmfgL ePsf] 5

\$ = lqe'jg ljZ]ljBfno, s]lGb]o k':tsfnofO{ e-Resources k]of]u u/]jft
?=@%) aflif{s z'Ns e'QmfgL ul/Psf] 5

% = lqe'jg ljZ]ljBfno sfo{qmd DaGwg gljs/Of z'Ns jfkt ?=1))))))
e'QmfgL ePsf] 5

Books

tx / ;+sfout cWoog / cWofkg sfo{nfO{ ;/n / ;xh agfpg ;Gbe(
k]f7\ok'ts ;xt (((&* k'tsx? /x]sf] k'tsfno cien]vdf 5 ;.ty) o, aif(
?=#&)*\$ d'Nosf] k'ts v/Lb ePsf] 5

xfn

! _ slff sf]7fdf Attached Desk & Bench 260 yfg

@_ kjzf:sLo sfdfnfO{ :xh / ;/n jgfpq .fjkmf.)6 l), b/fh .fgf 7"nfj u/L l) yfg, l6.6]jn !\$. Knfii6s s"lr{ @% yfg, xtfjmf sf7sfj s"lr{ @% yfg, .fbf sf7sfj s"lr{ !" yfg, a)7s slfdf /fp08 6]nsfj .fy @\$ yfg s"lr{, kjzf.lgs 6]jn .fgf 7"nfj u/L hDdf l@. yfg,

Financial Progress

Analysis of Financial Resources/Income of the Last Three Years				
S.No.	Particulars	B.S. 2077	B.S. 2078	B.S.2079
1	Students' Fees	9566920	16972636	19455950
2	UGC Regular Grants	1307100	1735000	2160000
3	UGC Procurement (Matching Grants)	2238239.94	0	0
4	UGC Performance Grants	0	0	1000000
5	UGC Annual Report Grants	100000	0	0
6	UGC DLI S Grants + DLIS and other Grants	2716080	0	0
8	UGC's Furniture Procurement Support	0	0	1000000
9	UGC's Building Construction Support		0	3173855
11	Gandaki Province (Compound Wall Construction) Support	3697177	0	0
13	dfjhs.ljaf. sfaf(nosf) cfy(s .xofju	0	0	942041
14	a) Lxof gu/kfinsfsf cfy(s .xofju		1153134	1442849
15	d of"bl ufjFkfinsfsf cfy(s .xofju	0	286635	0
16	sfhLjg .b:off z"Ns.kfKl	90337	80005	165000
17	a)+s Jofh kfKl	59596.45	124211.79	130164.1
18	6]G8/ kmd(ljgmL af6 kfKl	0	30500	69000
19	Miscellaneous Income + Rent	156180	19350	22500
20	Teaching Practice and Educational Certificate.	0	450000	550000
	Total	19945098.39	25851451.79	30111359.1

Expenditure Analysis of the Last Three Years				
S.No.	Particulars	B.S. 2077	B.S. 2078	B.S.2079
1	Salary and Allowance	9380587.45	10605124.19	12244036.6
2	TA/DA	113530	126800	147000
3	Office Materials & Stationery	62290	64230	41370
4	Printing and Publishing	348947	245480	174680
5	Free Students' Union Support	31000	0	77790

6	Public Campus Charges	3500	0	86800
7	Exam and Registration	1313325	2407225	2581710
8	Communication	239020	9650	77364
9	Hospitality	272874.84	332113.13	453084.1
10	Sports & Prizes	27550	19300	31200
12	Advertisement	11000	28700	77279
13	Scholarship distributed	0	301500	0
14	Financial Support & Donation to Society and PSU	0	123700	26000
15	Educational Tour/Excursion	50000	278952	478000
16	Tax on Interest/Bank Commission	2875.46	247.35	8905.36
17	Auditor's Remuneration	37120	27000	38900
18	Water & Electricity	38861	54091	60909
19	Peons' Uniform/Security Guard's Uniform	5000	12350	0
20	Miscellaneous Expenses	203400	245314	60769
21	Technician Charges	40000	203200	203400
22	QAA Project Expenses	225727	369795.08	84435
23	Campus Chief's Allowance	111479	118824	144164
24	Research and Training Expenses	185725	230185	102305
25	TU's program renewal Charges	0	387000	100000
	Sub-Total	12693611.76	16192760.75	17286120.06

Capital Expenditure [Major & Minor Infrastructures developments, Equipment & Books]				
1	Building Construction	1945098.66	1499789	2973361.67
2	Repair and Maintenance	427042.41	392706.81	42225
3	Furniture	49950	298950	155601.66
4	Equipment	532755	117300	60000
5	Books	158422	351724	170784
6	Land Purchased	0	0	375000
	Sub-Total	3113268.07	3598451.81	4276972.53
	Grand Total	15806879.83	18591222.56	21573092.59

Audit Observation/Issues and steps to mitigate the issues raised by Audit Observation in the Last fiscal year.

i= [Z]Bfno cg' bfg cfo]u4ff ; +rflnt u'0f:u' ;'lg|Zrttf / k[Tofog sfo{qmdn] lbPsf] 'emfa cg' f/ Kn, 6' cGtu]tsf, Dk'0f{ cfDbfgL tyf vr{ lx'fa ijj/0f 5'6'6f 5'6'6) /Vg' kg][Joj: yf eP adf]lhd ut aif[b]lv n]vfkf/lfof k[l]tj]bg klg 5'6'6f 5'6'6) agfO[k]ft u/Psf] 5.

@= cfy[s aif[@)&(') df o, d:of["bl ax' d'vL SofDk,n] b]xfo cg' f/ /fh] hDdf u/]sf] 5.

-s_ !% k|ltzt -cfó s/_ jfkt ?=5^%l%
 -v_ l=% k|ltzt -clujd cfos/_ jfkt ?=1&)|8%=@#
 -u_ l k|ltzt - ,fdflhs ,/lff s/_ jfkt ?="*%%==%# -PAN df hDdf ul/Psfj_

Social Progress

College's Involvement in Social Activities

- s_ ljZj jffj'Of lbj sfj pknlodf SofDk;df cWooq't :gfts txsf ljBfyL{x?af6 6fn
 /,kmfO{ sfo{qmdcf ,lqmo :xefuLtf
- v_ :fdflhs ?kdf ,+rfng ePsf x/s sfo{qmdcf SofDk;sfj pNn]Vo :xeflutf /x}sfj
- ú_ :yflgo /sf/4i/ ,+rfng ul/Psf lj]w sfo{qmdx?df SofDk;sfj k|tflghwTj ub}{
 :lqmo :xeflutf hgfOPsfj
- 3_ nj[®]lus lx+ f la?4sfj cleofgnfO{ ,kmin agfpg lhNnf k|x/L sfof(no,
 ndh[®]sfj :xsfo{df ,rjtgfd^{ns} sfo{qmd ,+rfng w}sfj
- *_ ctt ljKgg ljBfyL{x?nfO{ Kn, 6' , gfts / :gfts}Q/ txdf u/L hDdf #S^{*)})
 lzlf0f z'Ns 5'6 lbOPsfj

Society's Contribution to College

- s_ @)* h)7 @@ ut] ljZj jffj'Of lbj;sfj pknlodf :j=l=o⁴f/f SofDk; k|/df
 j|lff/fk0f sfo{qmd :DkGg
- v_ @)* a}zfv @% ut] ljZj /j8qm; lbj sfj pknlodf /fhof]u O(Zj/Lo ljZj]jBfnosf
 k|lzifs a|Dxs'df /fh' 3nj4f/f Motivational Speech tyf Wofg
- u_ @)* >fj0f)% ut] lj=lk=sfjO/fnf d[lt lbj;sfj pknlodf SofDk; k|/df g]kfnL
 sfFu], lhNnf ,ldit j8f g+=& 4f/f a[lffrf]k0f sfo{qmd
- 3_ @)* >fj0f l) ut] World Drowning Day sfj pknlodf jf Yo sfof(no ndh[®]4f/f
 slff ll /l@ sf ljBfyL{x?nfO{ ,rjtgf sfo{qmd SofDk; xndf :DkGg

Plan for College's Contribution to Society

- s_ ljKgg ju{ nfO{ nilft u/L pRr lzlff cWooq ug{ cfkm'gf] lhNnf 5f8L afix/ hfg]
 k|llIQ /f]Sg z]llfs hfU'Of NafO{ 5fq[[IQsf] Joj,yf ePsf] s'/f ,+r/sf
 dfWodx?af6 hfgsf/L w/fpg]

- v_ a]nf a]nfd] cleef]s e]nf u/O{ SofDk;sf] ult]lw o:n] lbg] ;]wv k|ult cflbsf af]df hfgsf/L u/fpg]
- u_ cg;GwgfTds lqmo]snfk u/L d]hsf] nflu ckl/xfo{ cfZostsf] af]df ;;"lrt ug][u/fpg]
- 3_ ;dfhdf l]Bdfg l];+utL tyf l]s[ltsf] lg/fs/Of ug{ z]l]fs ;+yfsf] ;dfh k|lt / ;dfhsf] z]l]fs ;+yf k|lt b]foT] / clwsf/sf] af]df ;;"lrt ug][
- e_ SofDk;sf] b]t / ;w]/sf nflu ;dofg's'n ;Dk'Of[cleef]s ;z'elrGts ;dfh;]L ;z]l]fk]dL ;f]h]l]ts bn / cGo ;f]sf/]fnfx?sf] e]nf u/L z]l]fs ef]lts cfly{s ;fd]l]hs k|lt]bg k|t't ug][
- r_ SofDk;sf] l]xtdf cdf]/fq v]6g' ePsf z'elrGts ;dfh;]L P]+ b]l]fx?nfO{ c]egGbg / ;Ddfg sfo{qmdx? ;+rfng ug][
- 5_ SofDk; ndh* lhNnfs) gd'gf ;d'b]l]os SofDk;df ?kfGt/Of x'+b}5 o;df a]sf] ;lqmo ;xflutf ckl/xfo{ 5 eGg] j]f]f]/Of ;]hgf ug{ a]nf a]nfd] ;ef. ;d]f]fx u]j]7L cflb ;+rfng u/L ;+alGwt ;a]nfO{ SofDk; k|lt c]slif[t ug][
- h_ l]b]l]zg] o]j]h]gz]QmnfO{ ;b]zsf] dxT] / l]b]zsf ;s]f]Tds tyf gs/]Tds kl]sf c]w]/Of]fx?sf] af]df k'li6 ug{sf nflu sfo{qmd ;+rfng ug][

Issues & Challenges

SofDk;sf cNksfing / bL3{sfing r'gf}tLx?

- > SofDk;df b]nt cflb]f]L hgh]f]L 5f]qf / cfly{s l]kGg]f ePsf l]BfyL{x?sf] afx'Nof
- > l]BfyL{x?af6 s]ff 5f8]g] pRr b]/nfO{ Go'g ug{
- > tx p]QOf{ kZ]ft /]huf/Lsf] k'Of{ Uof/]G6L gx'g'
- > ;do ;fk]l]f c]w]/gs ef]lts k"j]f{w]/x?sf] sdL
- > cfly{s?kdf ;DkGg l]BfyL{x?nfO{ c]slif[t ug{ g;Sg'
- > k]f]s]fing tyf ;fods]fing s]ff
- > l]z]l]fk]l]tsf] cleef]s tyf l]BfyL{x?df a9\b) uPsf] lg/fz]fnfO{ x6fpg
- > ;do ;'x]f]+b]f] p]l]t ef]lts P]+ z]l]fs j]f]f]/Of lgdf{Of ug{
- > l]leGg c];/sf] v]f]h]Lsf ;fy} pRr l]z]l]fsf] nflu lhNnfaf6 af]x]/g] l]BfyL{x?nfO{ lhNnf] /]Sg
- > a]b]l]zs df]x

Mitigation Measures Taken to Address the Issues & Meet the Challenges.

- !_ iqj[sf] ;Dk"Of{ k|fifsing. fodsdingdf ;+rfint slifx? lbjf ;dod ;+rfng ug}{Joj,yf ldnfpgsf] nflu cg'/r]w ug}{
- @_ k|f]lws / ;do ;fk]lf ijfox?sf] eWofkg ug}{ Joj,yf ug}{
- #_ cfw'igs ef]lts k"jf(wf/x?sf] Joj,yf ldnfpgsf] nflu cfly{s ;f]tsf] Joj,yf ug}{
- \$_ z]lifs hfu/Ofsf] nflu ;ef. ;Dd]ng,uf]i6L. ;ldgf/,tfind cfibsf] Joj,yf ug}{
- %_ bftfx?sf] vf]hL u/L 5faq[IQ j]l4 ug}{

Plan for Addressing the Issues & challenges

- !_ k|fWofkgdf ;+nUg k|fWofksx?nfO(z]lifs pgGgog sfo(qmdsf] Joj,yf ug){
- @_ ;yfigo lgsfo tyf ;/f]sf]jntx? ;+u ;dGjo ul/ ef]lts l]sf,sf] nflu kxn ug}{
- #_ z]lifs hfu/Ofsf] nflu ;ef. ;Dd]ng,uf]i6L. ;ldgf/,tfind cfibsf] Joj,yf ug){
- \$_ tx tyf ;+sfo plQOf{ u]sf l]BiyL(x?sf nflu ;yfigo t]df ;+rfint ;+3 ;+yfx? ;+u /f]hufiLsf nflu kxn ug){
- %_ l]Z] l]Bfno cg'bfg cfaf]uaf6 z]lifs u'Of.t/ k|Tofogs[t @)@@ ePsf] x'Fbf SofDk,nfO{ cGt/(fi6ko dfGoff k|fKt z]lifs jttf]Of tof/ u/L nfu" ug){
- ^_ l]b]zL l]Z]ijBfno ;+u elugL ;DaGw ;yikt u/L z]lifs jttf]Of pRr agfpg] sfo{ yfngL ug){

Annual Work Plan & Budget of the Current Fiscal Year (As per the strategic Plan)

[cf-a=@\)*\) ;! sf\] k\]:tllit ah\]6 -:gfts tyf ;gftsf\]Q/ tx dfq](#)

s ;+ =	cfDbfgLsf lzif{sx?	?=	s ;+ =	vr{sf lzif{sx?	?=
			!	tna	
1	e=Nof=		\$_	-k"Of{sfing	10500000

s =;+ = =	cfDbfgLsf lzif{sx?	?=	s =;+ = =	vr{sf lzif{sx?	?=
s_	ltns a= kf}8}n clfo sfjif	505535	v_	-cf+lzs	150000
v_	lul/hf k fb sf}O/fnf clfo sfjif	500000	u_	-gfts}Q/ tx	1400000
u_	sk=df}xg a=ykf clfo sfjif	500000	@	eQf	90000
3_	k f=s sNof}fsf/L sfjif	9524501.84	3	b}lgs e d}f eQf	150000
#_	f=-af= a)s: #)S))'('))	2325188.59	4	sfof{no ;dfu L.;6}zg/L	50000
r_	Un}an cfO{-Pd=O{-a)s })&&	2566094.14	5	5kfO{ tyf k sfzg	200000
5_	s{lif ljsf, a)s	5134	6	;'rgf tyf ;+rf/	100000
h_	g}kfn a)s ln= \$^%	65850.5	7	vfg}kfgL tyf l}h nL	70000
em_	k ZsL afFsL	893702.34	8	sd{rf/L kf}zfs	
2	l}BfyL{ zNs		9	ctly ;Tsf/hnkfg	200000
s_	;gfts	12150000	10	SofDk; ;ef vr{	150000
v_	;gfts}Q/	4140000	11	e}g l}gdf{Of	0
3	a)s Aofh	110577.93	12	dd{t ;+ef/	500000
4	l}Zj}Bfno cg'bfq cfof}u xof}u		13	knig{r/	1000000
s_	lgofcl cg'bfq	2500000	14	k' ts v /b	500000
v_	e}g l}gdf{Of=knig{r/ v /b	1000000	15	5fq}l}Q s_ SofDk;sf} l}ghL ;f}t	300000
u_	sfo{ ;Dk}bfq d'= cg'bfq	1000000		v_ ltns a=clfo sfjif	100000
e	;f+;b ljsf, sfjif	1000000		u_ lul/hf k fb sf}O/fnf clfo sfjif	100000
7	k b}z ;sf/ ;xof}u	2000000		3_ sk=df}xg a=ykf clfo sfjif	100000

s =-;+ =	cfDbfgLsf lzif{sx?	?=	s =-;+ =	vr{sf lzif{sx?	?=
s_	a}Lzx/ gukfnf	300000		*_jzjif 5fqj}Q - k^0f_	400000
v_	cGo kfnsfx?	1000000	14	k/Lff z'Ns	
8	cfhLjg b.otf z'Ns	150000	s_	-lq=ij=	600000
s	z}lfs k{df0f kq	200000	v_	k}of}ufT ds=cEof ; lzif0f	450000
10	SofG6g ef8f	30000	u_	-SofDk; - cfGt/s_	50000
11	k}of}ufT ds=cEof, lzif0f z'Ns	150000	3_	- gftsf}Q/ tx	800000
			17	/hig}zg tyf jif z'Ns	250000
			18	hUuf v/b	3000000
			19	v/n d}bfg tyf sDkfp08L ⁸	2500000
			20	v}ns'b/ k' :sf/	100000
			21	ijfkg	150000
			22	nj=k=ktf/>lds	35000
			23	j=j=o" = tyf cGo ;xofju	150000
			24	cWoog c}nf}sg e d0f	
			s_	+rfs ;ldt	200000
			v_	-k/f=s=e d0f	200000
			u_	-ijBfyL{	200000
			25	a)s sldzg tyf /fn;} hDdf	5000
			26	kif}lws vr{	50000
			27	z}lfs fdfu}L v/Lb	1000000

s =;+ = cfDbfgLsf lzif{sx?	?=	s =;+ = vr{sf lzif{sx?	?=
		kiAns SofDk: z'Ns	15000
		lj w	150000
		QAAV{	150000
		Research Activities	800000
		lq=lj=sfo{qmd g Ls'Of vr{	55000
		jj a fO6 tyf .km\Gjjo/ jflif{s z'Ns	200000
		lq=lj=s Gblo K' tsfno z'Ns	25000
		OG6/g]6sfj afif{s z'Ns	25000
		tlnd tyf ufj 7L	250000
		dGtd df]Hbft	
		lms a= kf;8)n clfo sfjif	505555
		lul/hf k fb sf]O/fnf clfo sf]=	500000
		sk=df]xg a=ykf clfo sfjif	300000
		k f=s sNotOfsf:L sfjif	11900000
		/f=af= a's #)S)))^))!	258000
		Unf]an clO{=Pd=O{=a) s)&&	300000
		g]kfn a)s ln= S^%)	3000

s =-;+ =	cfDbfgLsf lzif{sx?	?=	s =-;+ =	vr{sf lzif{sx?	?=
			em_	k}ZsL km5f}{6 x'g affsL	893701.34
	hDdf	44125256.34		hDdf	44125256.34

cfFa=@)*)!)! sf] kl:tfijt ah]6 -Kn; 6' dfq

s =-;+ =	cfDbfgLsf lzif{sx?	?=	s =-;+ =	vr{sf lzif{sx?	?=
	l}BfγL{ z'Ns	4140900	1	lna	
1	Kn; 6'			-cf+lzs	-1300000
2	z}lfs k}dof kq		2	eQf	6000
3	k}of}uTds=cEof lzifof z'Ns		3	b}lgs e}dof eQf	50000
4	c=Nof= a}+s df}Hbr	899703	4	sfof{no }dfu}L; 6}zg/L	20000

sf=;+ =	cfDbfgLsf lzif{sx?	?=	sf=;+ =	vr{sf lzif{sx?	?=
			6	'rgf tyī +rf	10000
			7	vfgjkgL tyf ljh'nL	
			8	cliy .Tsf/ hnkfg	50000
			9	ef8fjkt e'QmfgL	1200000
			10	K' ts vLb	150000
			11	5fqjIQ s_ SofDk,sfj ighL j jt	50000
				v lins a=cifo sfjif	20000
				u_luhf k fb sfjO/rnf cifo sfjif	20000
				3_sk=dfjxg a=yfkī cifo sfjif	20000
			12	k/Lif z'Ns -p=df=lj=	200000
				- k of]ufTds-eEof, izifOf	150000
				-SofDk -cfGtl/s	50000
			13	/lhi6]zg z'Ns -p=df=lj=	100000
			14	v]ns'b / k'/sf/	50000
			15	lj1kfg	50000
			16	cWoog c]nf]sg e dOf	
				-lBfyL{	50000
			17	lljw	50000
			18	cIGtd df)Hbfī	
				Unfjan cfO{=Pd=O{=a}s &&l{	1353705
	hDdf	4879T0E		hDdf	4879T0E

Projected Annual Work Plan & Budget of the Three Fiscal Year Following the current Fiscal Year (As per the strategic Plan)

A. Educational Reform

D) Academic Programmes

Academic quality is the first and foremost priority of this institution. The success is measured through academic performance. The sole objective on its establishment was to provide quality education. At present the academic environment is not competent enough for the fast-changing world. Present educational expectation is very high and so to meet that standard we have to launch new and advanced methodology with highly efficient and dedicated human resources. Here we present some activities which will help to bring dynamic change in our institution.

- Organization of Seminar/ Orientation/Workshop.
- Support for core teacher/staffs to further studies.
- Supply computer to administrative chief, faculty chief & for student to increase their work & education efficiency as per requirements.
- Exposure Visit to the renowned universities/colleges (national & International) for teacher's, management committee.
- Research activities.
- Computer Training for teaching and non-teaching staff.
- Electronic Educational Materials appliances in classes.
- Monitoring teaching learning activities by class observation.
- Purchase of Books.
- Establish the Campus in QAA System which helps for responsibility, accountability, & transparency to own duties.

S.N.	Program cum Activities	Unit	Number	Per unit cost	Total cost
1	Organization of Seminar/ Workshop/Orientation	no	5	50000	250000
2	Support for teacher/staffs to further studies.	no	2	70000	140000
3	Supply computer to administrative chief, faculty chief & for student to increase their work & education efficiency	no	30	35000	1050000

4	Exposure Visit to the renowned universities colleges (national & International) Teacher's, Management Co.	times	5	200000	1000000
5	Research activities	times	5	50000	250000
6	Computer Training for teaching and non-teaching staff	event	2	20000	40000
7	Electronic Educational Materials: soft board, different chart CC Camera etc.)	times	1	200000	200000
8	Monitoring and feedback mechanism on teaching learning activities through class observation.	event	regular	\$0000	\$0000
9	Purchase of Books			200000	200000
10	QAA Project Program		6month	300000	300000
	Total				3510000

II) Administrative Reform Programmes

Administration is the mirror of the activities of a campus. It is the heart of campus and without improving its performance campuses cannot make a paradigm shift. So, here we propose some activities that should be responsible to improve the quality of staff, institutional settings and working environment.

- Different Computer Training package to non-teaching staff
- Report writing training to Administrative Staff
- Seminar to identify the problems of administration and their solution
- Library training for library staff
- Account package training for account staff
- Filing and documentation training
- Capacity development training on administrative record keeping, collection and analysis
- Visit program for administrative and library staff
- Regular review meeting/workshop
- Regular monitoring & supervision
- *Furnishing & Decoration for Administrative Building*
- *Establishment of unit for EMIS with Human Resources Allocation*
- Establishment of E-library

Administrative Reform

S.N	Program and Activities	Unit	Number	Per unit cost	Total cost
1	Computer Training package for non-teaching staff	event	2	30000	60000
2	Report writing training to campus chief assistance campus chief, HODs, Subjects chief & non-teaching staffs.	event	1	25000	25000
3	Seminar to identify the problems of administration and their solution.	no	2	50000	100000
4	Package Installation: Library package, administrative package etc.	times	1	150000	150000
5	Library training for library personnel.	no	2	10000	20000
6	Account package training for account staff.	no	2	15000	30000
7	Filing and documentation training	no	2	10000	20000
8	Capacity development training on administrative record keeping, collection and analysis.	no	2	10000	20000
9	Visit program for administrative and library staff.	event	1	35000	35000
10	Regular review meeting/workshop.	times	5	5000	25000
11	Monitoring & supervision	times	regular	50000	50000
12	<i>Furnishing & Decoration for Administrative Building</i>			450000	450000
12	<i>Establishment of unit for EMIS with Human Resource Allocation</i>			360000	360000
13	Establishment of E-library				1630500
Total					2975500

III) Student Mobilization Package Programme

Students are the prime factor of any academic institution likewise the sole objective of this campus is to provide quality education to the students. Modern teaching learning methodology is based on student centre method. Students' participation in different activities makes them more competent and matured. Here we are trying to involve student from planning to monitor. We hope that students' involvement would be helpful to attract more students

towards campus, to increase pass out rate, to make student creative and multifaceted. Here we propose some programme and activities to reduce the gap of students' participation.

- Scholarship programme.
- Student counselling programme.
- Placement Service Student help centre.
- Special class for weak students. Tutorial classes for needy students.
- Health care service.
- Orientation about library, class, computer to new students.
- *Establish computer lab to produce computer literate students.*
- Computer training to students.
- Organization of extracurricular activities developing a separate calendar.
- Educational Tour program to different faculties.
- Establish IT centre
- Training on information technology
- Students-Employer interaction.

S.N.	Program cum Activities	Unit	Number	Per unit cost	Total cost
1	Scholarship program	times	5	300000	1500000
2	Student counselling program	times	regular	100000	100000
3	Placement Service Student help center	times	regular	75000	75000
4	Special class for weak students: Tutorial classes to needy students. (annual program)	times	5	40000	200000
5	Health service (general health camp annually)	no	3	80000	240000
6	Orientation about library, class & computer to new students. (annual program)	no	5	8000	40000
7	<i>Establish computer lab to produce computer literate student</i>	times	2	250000	500000
8	Computer training to students	event	regular	100000	100000
9	Organization of extracurricular activities developing a separate calendar.	times	regular		300000
10	Educational Tour program		S/S	70000	350000
11	Establish IT centre	times	1	190000	190000

12	Training on information technology.	times	regular	45000	45000
13	Students – Employer interaction.			50000	50000
Total					3690000

IV) Research & Development Programme

Research activities are a real symbol of academic culture. Researches in different area enrich the knowledge of scholar. Research opportunity should be open both for lecturer and students to develop academic culture. Campus has proposed some research topics which are mainly related to the problem of campus.

- Research on "Campus resources and Challenges "
- Research on potential technical subject to be launched.
- Study about the scope of different subject to generate employment
- Research on "Development activities carried by NGOs and its impact on social transformation "
- Research on teaching learning methodology
- Journal publication.

S.N.	Program cum Activities	Unit	Number	Per unit cost	Total cost
1	Research on "Campus resources and Challenges "	event	1	100000	100000
2	Research on potential technical subject to be launched.	times	1	80000	80000
3	Study about scope of different subject to generate employment.	times	1	60000	60000
4	Research on "Development activities carried by NGOs and its impact on social transformation "	no	1	50000	50000
5	Research on teaching learning methodology	no	1	100000	100000
6	Journal Publication	event	5	35000	175000
Total					565000

V) Resource Mobilization & Sustainability Plan

Financial position plays an important role for the success of an institution. None of the institution can get success without financial strength. Financial strength may help to overcome many issues. The community base campuses have yet not received substantial support from government and university grant commission; it is based on trust of community. Despite growth potentialities the campuses face resource constraints. To provide quality education the first requirement is to strengthen economic conditions of the campus. To rescue from this financial crunch, such campuses need to develop a strong resource mobilization plan.

At present, MMC's primary earning is students' fee which covers 80% of its expenses, the second major source is community support, and other token sources are support from UGC, support of local bodies etc. There are some other potential temporary and permanent sources to solve financial problem. Campus may invest in small Hydro project of this district. Similarly, in consensus campus may use River Marshyangdi's stone pebbles and sand to raise fund permanently. We have 62 ropam lands in Bajrakhet VDC 7 lamjung. There are so many natural sources to earn money.

1. Workshop to identify permanent earning sources of campus.
2. Lobbying with different related groups etc to increase resource.
3. *Development of land-use plan*
4. Access analysis on natural resources and public resources.

S.N	Program cum Activities	Unit	Number	Per unit cost	Total cost
1	Workshop to identify permanent earning sources of campus.	event	1	30000	30000
2	Lobbying with different related groups etc. to increase resource.	times	regular	50000	50000
3	<i>Development of land use plan</i>	times	1	100000	100000
4	Analysis on access of public and natural resources	no	1	50000	50000
Total					230000

VI) New Academic Programme

Education has to catch the sentiment of contemporary society and needs to gear up for it. Modern and advance subject are the demand of student as well as society or nation. Institution, if fails to understand the needs and interest

of society, cannot move ahead. Subjects which are marketable need to be identified through research. We therefore mention some new subjects for launching

- Launching of New subjects (BBA & Other).

New Academic Program					
S.N.	Program cum Activities	Unit	Number	Per unit cost	Total cost
2	Launching of Different Subject in Master & Bachelor level	times	2	1300000	1300000
Total					1300000

B. Infrastructure Development

Quality education cannot be provided without sufficient and luxurious infrastructure. Formal education begins from physical facilities. Modern educationist argued that suitable physical infrastructure may add value in education. To apply modern teaching learning method, we need sophisticated physical infrastructure and teaching learning materials. Some basic physical facilities plan to upgrade educational environment is mentioned here.

A. Building Construction

Now campus have four building with 37 Seven rooms. To run regular classes campus needs 40 rooms, so to fulfil the requirements of room campus should built next building. One Administrative 2 stairs Building is just finished we hope it fulfils some administrative requirement. We are making plan to construct hall on top of administrative Building. So, to open the door of quality education we need to construct following building.

- Construction of Auditorium Hall on top stairs of Administrative Building.
- Construction of Modern Academic Building & quarter for teacher staff
- Construction of Canteen
- Construction of Girls hostel
- Building for free student union/Construction of Refreshment building

B. Other Infrastructure construction

- Repair and maintenance of Building & Furniture
- Compounding of remained portion.
- Gardening / Levelling campus ground

Infrastructure Development					
S.N.	Program cum Activities	Unit	Number	Per unit cost	Total cost
1	Construction of Hall on top stairs of Administrative Building	no	1	1000000	1000000
2	Construction of Modern Student Learning Building & quarter for teacher staff.			20000000	20000000
3	Construction of Girls hostel	no	1	19500000	19500000
4	Building for free student union	no	1	1500000	1500000
5	Repair and maintenance of Building & Furniture	no	1	500000	500000
6	Compounding	no	1	1000000	1000000
7	Gardening / Levelling campus ground	no	1	400000	400000
Total					26350000

Estimated Budget Contribution from Different Stakeholders				
S.N.	Program Heading	Total Estimated Budget	Campus	UGC
1	Academic Program	3510000	1170000	2340000
2	Administrative Reform Program	2975500	991833	1983167
3	Student Mobilization Package	3690000	1230000	2460000
4	Research & Development Plan	565000	188333	376667
5	Resource Mobilization & Sustainability plan	230000	76667	153333
6	New Academic Program	1300000	433333	866667
7	Infrastructure Development	26350000	8782455	17567545
Total		38620500	12872621	25747879

Five years Implementation Plan

Academic Program								
S. N.	Program cum Activities	Unit	Number	Year of implementation				
				First	Second	Third	Fourth	Fifth
1	Organization of Seminar Workshop Orientation	no	5	1	1	1	1	1
2	Support for teacher staffs to further studies	no	2	0	1	0	1	0
3	Supply computer to administrative chief, faculty chief & to Student as per requirements to increase their work & Education efficiency	no	30	23	3	2	2	0
4	Exposure Visit to the renowned universities colleges (national & International)	times	5	1	1	1	1	1
5	Research activities	times	5	1	1	1	1	1
6	Computer Training for teaching staff & English language training for teaching & non-teaching staffs	event	2	1	0	1	0	0
7	Educational Materials: electronic appliances & other materials in classes (multimedia, cc camera, soft board, different chart etc.)	times	1	√	0	0	0	0
8	Monitoring and feedback mechanism on teaching learning	event	regular	√	√	√	√	√

	activities by class observation.							
9	Purchase of Books			√	√			
10	QAA Project Program			√	√			

Administrative Reform								
S.N.	Program cum. Activities	Unit	Number	Year of implementation				
				First	Second	Third	Fourth	Fifth
1	Computer Training package for non-teaching staff	event	2	1	0	1	0	0
2	Report writing training to campus chief, assistance campus chief, HODs, Subjects chief & non-teaching staffs.	event	1	0	1	0	0	0
3	Seminar to identify the problems of administration and their solution.	no	2	0	1	0	1	0
4	Package Installation: Library package, account package, administrative package etc.	times	1	√	0			
5	Library training for library personnel.	no	2	1	1	0	0	0
6	Account package training for account staff	no	2	1	0	0	1	0
7	Filing and documentation training	no	2	1	1	0	0	0
8	Capacity development training on administrative record keeping.	no	2	1	0	1	0	0

	collection and analysis							
9	Visit program for administrative and library staff	event	1		√			
10	Review meeting/workshop	times	5	√	√	√	√	√
11	Monitoring and supervision	event	regular	√	√	√	√	√
12	Furnishing & Decoration for Administrative Building			√	√			
13	Establishment of unit for EMIS with human Resources Allocation			√	√			
14	Establishment of E-library			√				

Student Mobilization Package								
S. N.	Program cum Activities	Unit	Number	Year of implementation				
				First	Second	Third	Fourth	Fifth
1	Scholarship program (annual program)	times	regular	√	√	√	√	√
2	Student counselling program	times	regular	√	√	√	√	√
3	Placement Service Student help center	times	regular	√	√	√	√	√
4	Special class for weak students. Tutorial classes to needy students. (annual program)	times	regular	√	√	√	√	√
5	Health service (general health camp annually)	no	3	√	0	√	0	√

6	Orientation about library, class & computer to new students: (annual program)	no	regular	√	√	√	√	√
7	Establish Computer Lab to produce computer literate student	times	2		√		√	
8	Computer training to students	event	regular	√	√	√	√	√
9	Organization of extracurricular activities developing a separate calendar	times	regular	√	√	√	√	√
10	Educational Tour Program	times	5	√	√	√	√	√
11	Establish it Centre	1				√		
12	Training on information technology	times	regular	0	√	√	√	√
13	students – Employer interaction	times	regular	√	√	√	√	√

Research & Development program								
S. N	Program and Activities	Unit	Number	Year of implementation				
				First	Second	Third	Fourth	Fifth
1	Research on "Campus resources and Challenges "	event	1	√				
2	Research on potential technical subject to be launched	times	1		√			
3	Study about scope of different subject to generate employment	times	1		√			
4	Research on "Development activities	no	1				√	

	carried by NGOs and its impact on social transformation."							
5	Research on teaching-learning methodology	no	1			√		
6	Campus Journal /annual report Publication	event	5	√	√	√	√	√

Resources Mobilization & sustainability Plan								
S.N.	Program cum Activities	Unit	Number	Year of implementation				
				First	Second	Third	Fourth	Fifth
1	Workshop to identify permanent earning sources of campus.	event	1	√				
2	Lobbying with different related groups etc. to increase resource.	times	regular	√	√	√	√	√
3	Development of land use plan.	times	1		√			0
4	Analysis on Access of public and natural resources	no	1			√		

New Academic Program								
S.N.	Program cum Activities	Unit	Number	Year of implementation				
				First	Second	Third	Fourth	Fifth
1	Launching of Different Subject in Master & Bachelor Level		2			√		√

Infrastructure Development								
S. N.	Program cum Activities	Unit	Number	Year of implementation				
				First	Second	Third	Fourth	Fifth
1	Construction of Auditorium Hall	no	1	√				
2	Construction of Modern Student Learning Building & quarter for teacher staff			Midterm vision				
3	construction of Canteen	no	1	√				
4	Hostel Construction for Girls			Long term vision				
5	Building for free student Refreshment Building union			Midterm vision				
6	Repair and maintenance Building & Furniture	no	1	√	√	√	√	√
7	Compounding			√	√			
8	Gardening levelling of Ground			√	√			
9	Develop vehicle parking facility	no	1	√				
10	Upgrading road from Campus gate up to ring road			√	√			

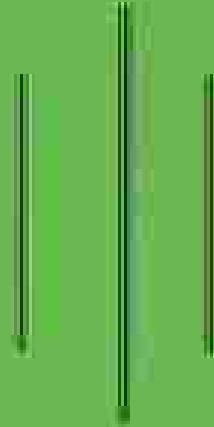
;+sfo	tx	PjIR5s Ijifox?
Joyyfkq	:gfts	BBS(Finance/Marketing/Accountancy)
;+sfo	:gfts}Q/	MBS (Finance/Marketing/Accountancy)
Iziffzf.q	:gfts	English/Nepali/Pop
;+sfo	I}I}({ #}I}({	
	:gfts}Q/	EPM/Curriculum
dfgljSL	:gfts}Q/	Sociology
;+sfo	:gfts	English/Nepali/Economics/Sociology
+2sfo{q	Iziff	English/Nepali/Math/Economics/Population/Sociology
md	Joyyfkq	Account/Hotel Management/Business
	dfgljSL	Studies/Business Math/Marketing

श्री मर्याडिदी बहुमुखी क्याम्पस

वेसीमहर, समजुइ

लेखापरीक्षण प्रतिवेदन

आ.व. २०७६-१०८०



लेखापरीक्षक
कमिल एण्ड एसोसिएट्स
रिजिस्टर अकाउंट एन्टरप्राइज
२०७६-२०७७
१०१, १०२, १०३



**ಶಿರಿ ಬಸವಾಚಾರಿ ಸಹಸ್ರಶಿರಿ ಕವಾಚಮಸ
ಕರ್ನಾಟಕ ಸರ್ಕಾರ**

ಕೆ.ಆರ್. ಪಿ.ಎಸ್.ಸಿ/2020-21 ಕೆ.ಆರ್. ಪಿ.ಎಸ್. ವಿಷಯ

ಕ್ರ. ಸಂ.	ಜನನ ತಾರೀಖು	ಧರ್ಮ	ತಾ.ಸಂ.	ಕರ್ಮ ಕಾರ್ಯ	ರೇಟಿಂಗ್
1	20/02/1992	1	1	2	...
2	21/02/1992	2	2	3	...
3	22/02/1992	3	3	4	...
4	23/02/1992	4	4	5	...
5	24/02/1992	5	5	6	...
6	25/02/1992	6	6	7	...
7	26/02/1992	7	7	8	...
8	27/02/1992	8	8	9	...
9	28/02/1992	9	9	10	...
10	29/02/1992	10	10	11	...
11	30/02/1992	11	11	12	...
12	01/03/1992	12	12	13	...
13	02/03/1992	13	13	14	...
14	03/03/1992	14	14	15	...
15	04/03/1992	15	15	16	...
16	05/03/1992	16	16	17	...
17	06/03/1992	17	17	18	...
18	07/03/1992	18	18	19	...
19	08/03/1992	19	19	20	...
20	09/03/1992	20	20	21	...
21	10/03/1992	21	21	22	...
22	11/03/1992	22	22	23	...
23	12/03/1992	23	23	24	...
24	13/03/1992	24	24	25	...
25	14/03/1992	25	25	26	...
26	15/03/1992	26	26	27	...
27	16/03/1992	27	27	28	...
28	17/03/1992	28	28	29	...
29	18/03/1992	29	29	30	...
30	19/03/1992	30	30	31	...



पी. चिंचवड एज्युकेशन ट्रस्ट
पिंपरी चिंचवड

पानांकी १

बी. ए. २०२०-२१चा अंतिम अंकांसाठी एच. व्हा. विभाग विषय

क्र.सं.	विद्यार्थी विभाग वरून को. नाव व नं.	विषय	एच. व्हा. अ.सं.	एच. व्हा. अ. नं.
१	पुणे विभा. अ.सं. १०१	विद्यार्थी सुख	१०१०१०००	
२	पुणे विभा. अ.सं. १०२	विद्यार्थी सुख	१०१०१०००	
	एकूट		२०२०२०००	२०२०

पानांकी २

बी. ए. २०२०-२१चा अंतिम अंकांसाठी असाधारण विद्यार्थी विभाग विषय:

क्र.सं.	विद्यार्थी विभाग	आचार्यी अ.सं.	विषय	एच. व्हा. अ.सं.	एच. व्हा. अ. नं.
१	असाधारण असाधारण वि.	पुणे विभा. अ.सं. १०१	विद्यार्थी सुख	१०१०१०००	१०१०१०००
२	असाधारण असाधारण वि.	पुणे विभा. अ.सं. १०२	विद्यार्थी सुख	१०१०१०००	१०१०१०००
३	असाधारण असाधारण वि.	पुणे विभा. अ.सं. १०३	विद्यार्थी सुख	१०१०१०००	१०१०१०००
		एकूट		३०३०३०००	३०३०३०००

पानांकी ३

बी. ए. २०२०-२१चा अंतिम अंकांसाठी विद्यार्थी विभाग विषय

क्र.सं.	विद्यार्थी विभाग	आचार्यी अ.सं.	विषय	एच. व्हा. अ.सं.	एच. व्हा. अ. नं.
१	असाधारण असाधारण वि.	पुणे	१०१	१०१०१०००	१०१०१०००
२	असाधारण असाधारण वि.	पुणे विभा. अ.सं. १०१	विद्यार्थी सुख	१०१०१०००	१०१०१०००
३	असाधारण असाधारण वि.	पुणे विभा. अ.सं. १०२	विद्यार्थी सुख	१०१०१०००	१०१०१०००
४	असाधारण वि.	पुणे	१०१	१०१०१०००	१०१०१०००
५	असाधारण वि.	पुणे	१०१	१०१०१०००	१०१०१०००
६	असाधारण वि.	पुणे	१०१	१०१०१०००	१०१०१०००
		एकूट		६०६०६०००	६०६०६०००
		एकूट असाधारण वि. विभाग		१०१०१००००	१०१०१००००

असाधारण व असाधारण अंकांसाठी असाधारण विद्यार्थी विभाग व असाधारण विद्यार्थी विभाग

क्र.सं.	विद्यार्थी विभाग	आचार्यी अ.सं.	विषय	एच. व्हा. अ.सं.	एच. व्हा. अ. नं.
१	असाधारण असाधारण वि.	पुणे विभा. अ.सं. १०१	विद्यार्थी सुख	१०१०१०००	१०१०१०००
२	असाधारण असाधारण वि.	पुणे विभा. अ.सं. १०२	विद्यार्थी सुख	१०१०१०००	१०१०१०००
३	असाधारण असाधारण वि.	पुणे विभा. अ.सं. १०३	विद्यार्थी सुख	१०१०१०००	१०१०१०००
४	असाधारण असाधारण वि.	पुणे विभा. अ.सं. १०४	विद्यार्थी सुख	१०१०१०००	१०१०१०००
५	असाधारण असाधारण वि.	पुणे विभा. अ.सं. १०५	विद्यार्थी सुख	१०१०१०००	१०१०१०००
		एकूट		५०५०५०००	५०५०५०००







श्री गंगादास बहुमुखी क्याम्पस
सुपुल, सुपुल



अनुसूची ४

श्री गंगादास बहुमुखी क्याम्पस, सुपुल, सुपुल

क्र.सं.	श्री गंगादास बहुमुखी क्याम्पस	विवरण	प्रस्तावित मूल्य	व्याज (प्रतिशत)	व्याज (रु.)	कुल मूल्य	व्याज (रु.)
१	श्री गंगादास बहुमुखी क्याम्पस	सुपुल, सुपुल	१००००००		१००००००		१००००००
२	श्री गंगादास बहुमुखी क्याम्पस	सुपुल, सुपुल	१००००००		१००००००		१००००००
३	श्री गंगादास बहुमुखी क्याम्पस	सुपुल, सुपुल	१००००००		१००००००		१००००००
४	श्री गंगादास बहुमुखी क्याम्पस	सुपुल, सुपुल	१००००००		१००००००		१००००००
५	श्री गंगादास बहुमुखी क्याम्पस	सुपुल, सुपुल	१००००००		१००००००		१००००००
६	श्री गंगादास बहुमुखी क्याम्पस	सुपुल, सुपुल	१००००००		१००००००		१००००००
७	श्री गंगादास बहुमुखी क्याम्पस	सुपुल, सुपुल	१००००००		१००००००		१००००००
८	श्री गंगादास बहुमुखी क्याम्पस	सुपुल, सुपुल	१००००००		१००००००		१००००००
९	श्री गंगादास बहुमुखी क्याम्पस	सुपुल, सुपुल	१००००००		१००००००		१००००००
१०	श्री गंगादास बहुमुखी क्याम्पस	सुपुल, सुपुल	१००००००		१००००००		१००००००
कुल मूल्य			१००००००		१००००००		१००००००









ಶಿವ ಮನ್ಯೋವೃದ್ಧಿ ಸಹಯೋಗಿ ಯೋಜನೆ
ಕರ್ನಾಟಕ, ಬೆಂಗಳೂರು

ಅನುಬಂಧ - ೧೨, ಕರ್ನಾಟಕ ಸರ್ಕಾರ

ಕ್ರ. ಸಂ.	ವಿವರ	ಮೊತ್ತ
1	ಅನುಬಂಧ - ೧೨	೨೨,೦೦,೦೦,೦೦೦
2	ಅನುಬಂಧ - ೧೨	೨೨,೦೦,೦೦,೦೦೦
3	ಅನುಬಂಧ - ೧೨ ಮತ್ತು ಅನುಬಂಧ - ೧೨	೨೨,೦೦,೦೦,೦೦೦
4	ಅನುಬಂಧ - ೧೨ ಮತ್ತು ಅನುಬಂಧ - ೧೨	೨೨,೦೦,೦೦,೦೦೦
	ಒಟ್ಟು	೮೪,೦೦,೦೦,೦೦೦

ಅನುಬಂಧ - ೧೨, ಕರ್ನಾಟಕ ಸರ್ಕಾರ

ಕ್ರ. ಸಂ.	ವಿವರ	ಮೊತ್ತ
1	ಅನುಬಂಧ - ೧೨	೨೨,೦೦,೦೦,೦೦೦
	ಒಟ್ಟು	೨೨,೦೦,೦೦,೦೦೦

ಅನುಬಂಧ - ೧೨, ಕರ್ನಾಟಕ ಸರ್ಕಾರ

ಕ್ರ. ಸಂ.	ವಿವರ	ಮೊತ್ತ
1	ಅನುಬಂಧ - ೧೨	೨೨,೦೦,೦೦,೦೦೦
2	ಅನುಬಂಧ - ೧೨	೨೨,೦೦,೦೦,೦೦೦
3	ಅನುಬಂಧ - ೧೨	೨೨,೦೦,೦೦,೦೦೦
	ಒಟ್ಟು	೬೬,೦೦,೦೦,೦೦೦

ಅನುಬಂಧ - ೧೨, ಕರ್ನಾಟಕ ಸರ್ಕಾರ

ಕ್ರ. ಸಂ.	ವಿವರ	ಮೊತ್ತ
1	ಅನುಬಂಧ - ೧೨	೨೨,೦೦,೦೦,೦೦೦
2	ಅನುಬಂಧ - ೧೨ ಮತ್ತು ಅನುಬಂಧ - ೧೨	೨೨,೦೦,೦೦,೦೦೦
3	ಅನುಬಂಧ - ೧೨	೨೨,೦೦,೦೦,೦೦೦
4	ಅನುಬಂಧ - ೧೨ ಮತ್ತು ಅನುಬಂಧ - ೧೨	೨೨,೦೦,೦೦,೦೦೦
5	ಅನುಬಂಧ - ೧೨ ಮತ್ತು ಅನುಬಂಧ - ೧೨	೨೨,೦೦,೦೦,೦೦೦
6	ಅನುಬಂಧ - ೧೨ ಮತ್ತು ಅನುಬಂಧ - ೧೨	೨೨,೦೦,೦೦,೦೦೦
7	ಅನುಬಂಧ - ೧೨ ಮತ್ತು ಅನುಬಂಧ - ೧೨	೨೨,೦೦,೦೦,೦೦೦
8	ಅನುಬಂಧ - ೧೨	೨೨,೦೦,೦೦,೦೦೦
	ಒಟ್ಟು	೨೨೦,೦೦,೦೦,೦೦೦

ಅನುಬಂಧ - ೧೨, ಕರ್ನಾಟಕ ಸರ್ಕಾರ ಮತ್ತು ಅನುಬಂಧ - ೧೨

ಕ್ರ. ಸಂ.	ವಿವರ	ಮೊತ್ತ
1	ಅನುಬಂಧ - ೧೨ ಮತ್ತು ಅನುಬಂಧ - ೧೨	೨೨,೦೦,೦೦,೦೦೦
2	ಅನುಬಂಧ - ೧೨ ಮತ್ತು ಅನುಬಂಧ - ೧೨	೨೨,೦೦,೦೦,೦೦೦
3	ಅನುಬಂಧ - ೧೨ ಮತ್ತು ಅನುಬಂಧ - ೧೨	೨೨,೦೦,೦೦,೦೦೦
4	ಅನುಬಂಧ - ೧೨ ಮತ್ತು ಅನುಬಂಧ - ೧೨	೨೨,೦೦,೦೦,೦೦೦
	ಒಟ್ಟು	೮೬,೦೦,೦೦,೦೦೦


ಮಂತ್ರಿ
 ಕರ್ನಾಟಕ ಸರ್ಕಾರ


ಉಪ ಮಂತ್ರಿ
 ಕರ್ನಾಟಕ ಸರ್ಕಾರ


ನಿರ್ದೇಶಕರು
 ಕರ್ನಾಟಕ ಸರ್ಕಾರ


ಅಧಿಕಾರಿ
 ಕರ್ನಾಟಕ ಸರ್ಕಾರ



LIDIN Document

Form No. 237905

Date / Time: 2023-04-12 10:58	LIDIN Number: 214527441000000004
Member Name: KAPIL KUMAR GHOSH	Date of Signing Document: 2023-12-01
Document Type: AUB	Audit Type: Other
Office Type: Other	Office Name: Harshvardh Mattew Complex
Type of Audit Opinion: Not Issued	Period (AD): 2023-01-01 to 2023-03-31

Financials Table

Sl.	Heading	Amount
1	Total Assets/LIABILITIES	NPA. 4022200.00
2	Gross Revenue/Profit/loss	NPA. 2291800.00
3	Profit Before Tax	NPA. 2291800.00
4	Tax/loss	NPA. 671000.00
5	Total Expenses	NPA. 2120800.00

Button: Action Document

Document Description

The LIDIN System has been developed by the Institute of Chartered Accountants of Nepal (ICAN) for members to submit and download of the documents and for issuing documents and following (based on submitted, registered and downloaded, provided ICAN assumes no responsibility) of application and verification of documents submitted by the members and the concerned members) that can be signed and verified.

To view LIDIN, please go to www.ican.org.np

